

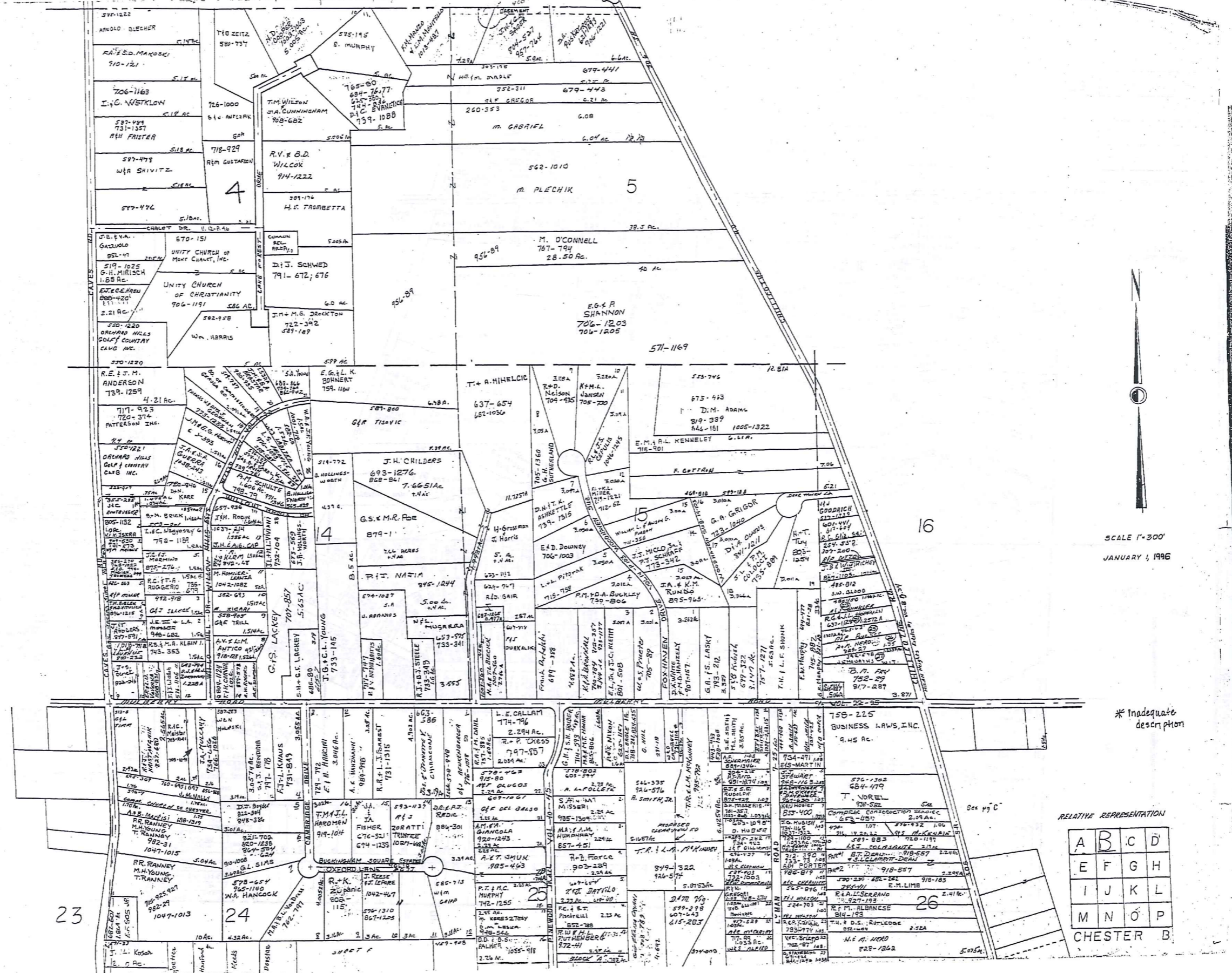
1-800-345-7334
TAMM-REID

SCALE 1"=300
JANUARY, 1995
RELATIVE REPRESENTATION

SCALE IN 1/16 OF AN INCH

* Inadequate description

	B	C	D
	E	F	G
	J	K	L
	M	N	O
	P		



TRM-REDI
1-800-345-7334



SCALE 1"=300'
JANUARY 4, 1996

* Inadequate description

RELATIVE REPRESENTATION

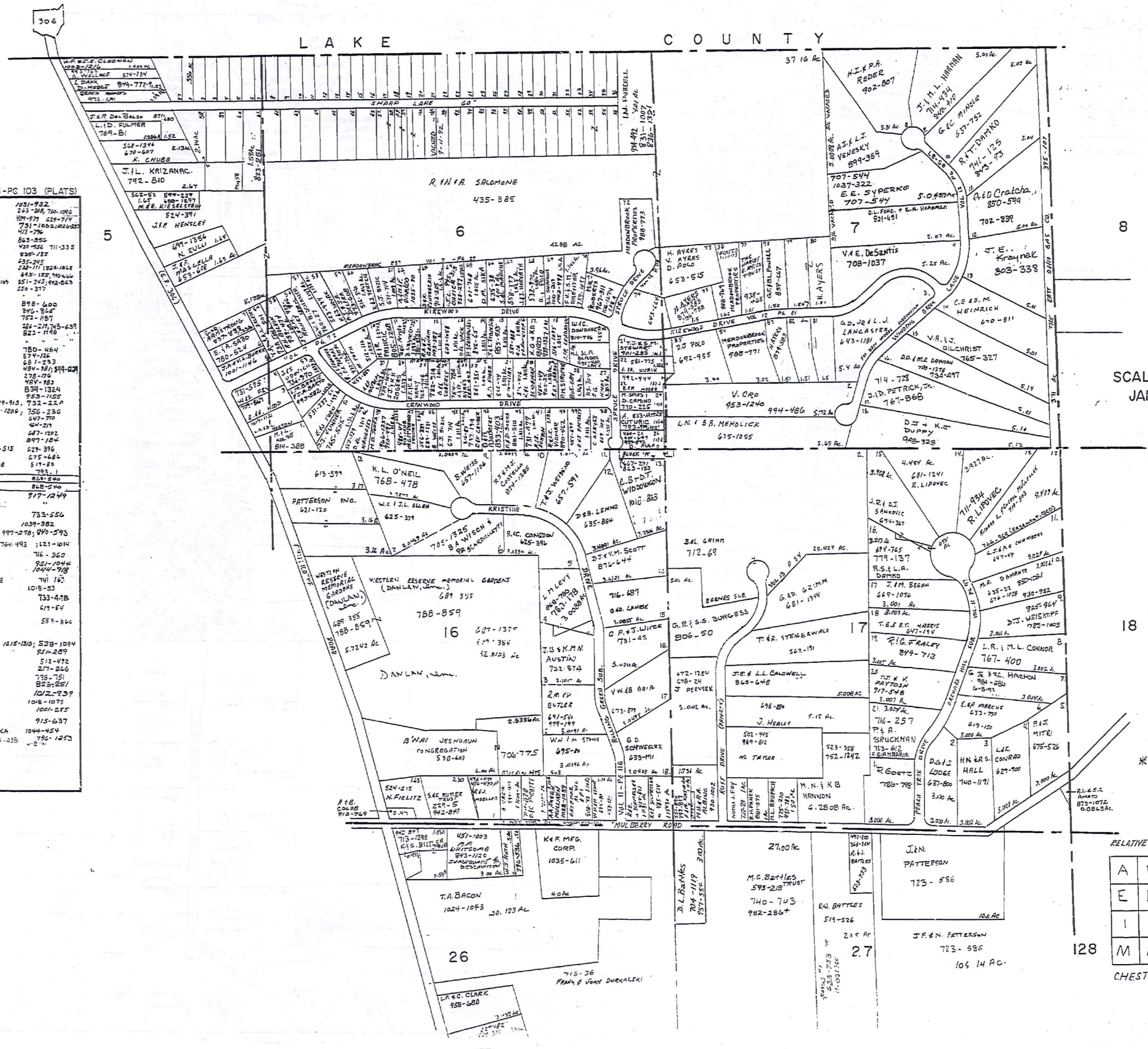
A	B	C	D
E	F	G	H
I	J	K	L
M	N	O	P

CHESTER B.

L A K E C O U N T Y

E SHARP SURVEY VOL.6-PC 103 (PLATS)

1.	M. SANTEK	1031-932
2.	D.L. CICCHELLA	243-244, 700-1092
3.	EDICENZO & R. DI PAOLO	109-979, 229-779
4.	R.L. WILDER	751-1022, 1023-1033
5.	R.H. MARRA	413-776
6.	V.T. ZANNO	803-556
7.	V. ZANNO	490-755
8.	B.C. WHITNEY	711-335
9.	A.S. TAYLOR	830-127
10.	J.T. SMYTH	635-245
11.	J.M. SMITH	528-111, 1248-1848
12.	J.M. SMITH	648-155, 1040-1041
13.	J.M. SMITH	351-243, 912-643
14.	J.M. SMITH	330-377
15.	J.P. PL	898-600
16.	M.C. KOVACIC	840-846
17.	R.M. S.F. DIMARDO	752-187
18.	C.M. G. BREZINA	282-273, 743-693
19.	R.H. ORSINI	821-1740
20.	J.A. VARGELIN	780-464
21.	W.J. COOPER	574-726
22.	J.P. DUBOVIK	631-293
23.	J.D. BOZIC	484-181, 819-428
24.	J.P. BOZIC	404-183
25.	J.P. BOZIC	278-79
26.	J.P. BOZIC	404-183
27.	J.P. BOZIC	404-183
28.	M.R. K. KOSLEY	834-1324
29.	F. RUCIC	989-913, 932-224
30.	C.E. WICKMAN	766-236
31.	G.J. REESE	661-1206
32.	G.J. REESE	647-770
33.	R.H. NICH	647-211
34.	R.D. DAVID & R. KLASS	647-192
35.	T.A. METZUL	807-184
36.	T.A. METZUL	627-515
37.	T.A. METZUL	627-396
38.	T.A. METZUL	675-684
39.	D. WEY	514-80
40.	CONCEIT LEON	783-1
41.	KAROLY K. SMITH	808-540
42.	K. CALABRESE	917-1249
43.	H.J. RACHANSKI	733-554
44.	Sel. of HUD	1039-382
45.	T.R. VERNON	997-278, 990-593
46.	D.A. KRAMER	704-493, 1121-1014
47.	G.W. L. STUHF	716-360
48.	K.A. SCHUBER	921-1044
49.	H.L. DE + R. GRASSER	1044-918
50.	G.D. KLEINSORGE + J. MOORE	741-163
51.	R.A. SHULTIS	1015-51
52.	H.C. GRASSI	733-418
53.	R.A. SHULTIS	619-54
54.	R.A. SHULTIS	557-346
55.	B.J. STEBIC	1015-180, 538-1094
56.	M.A.P.J. PETTI	914-289
57.	REC. CARLO	512-472
58.	E. SHARD	217-246
59.	S.L. SHARD	755-78
60.	A.M. MULLIKEN	880-281
61.	L. DIFRANCO	1012-239
62.	LINDLOW TRUST CO.	1018-1075
63.	G.W. WHITE M. OAK	1001-275
64.	G.W. WHITE	915-637
65.	J.G. WOODNORTH + TH. WARNEKA	1044-454
66.	T. KROKOVIC	790-1253
67.	T. KROKOVIC	791-235



SCALE 1" = 300'
JAN. 1, 1996

TRAN-REDI
1-800-349-7334



SCALE IN 1/10 OF AN INCH

* Inadequate description

RELATIVE REPRESENTATION

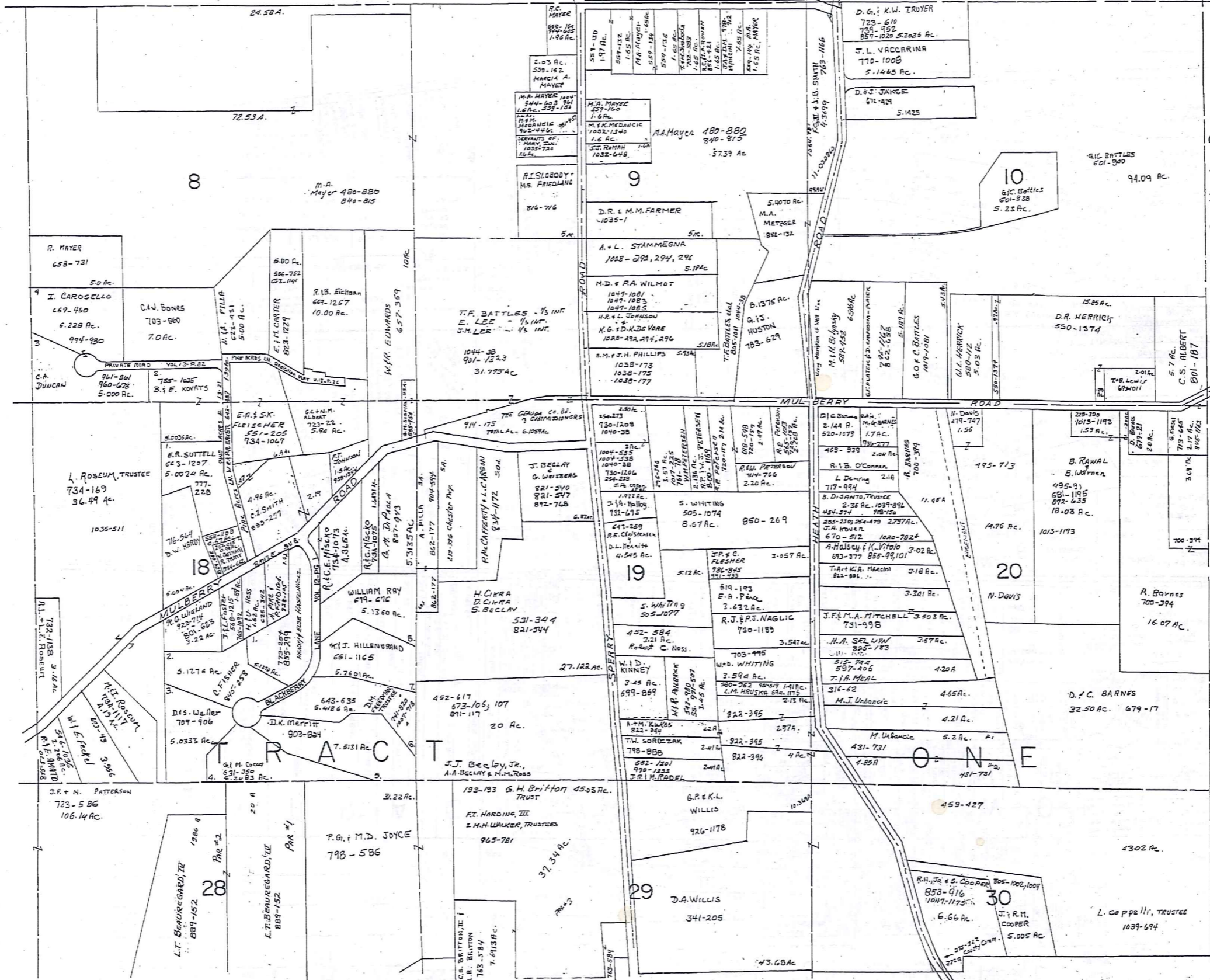
A	B	D
E	F	G
I	J	K
M	N	O

CHESTER C

210

L A K E G E M R O A D C O U N T Y

C H A R D O N T O W N S H I P



SCALE 1"=300'

TRM-REDI
1-800-345-7334



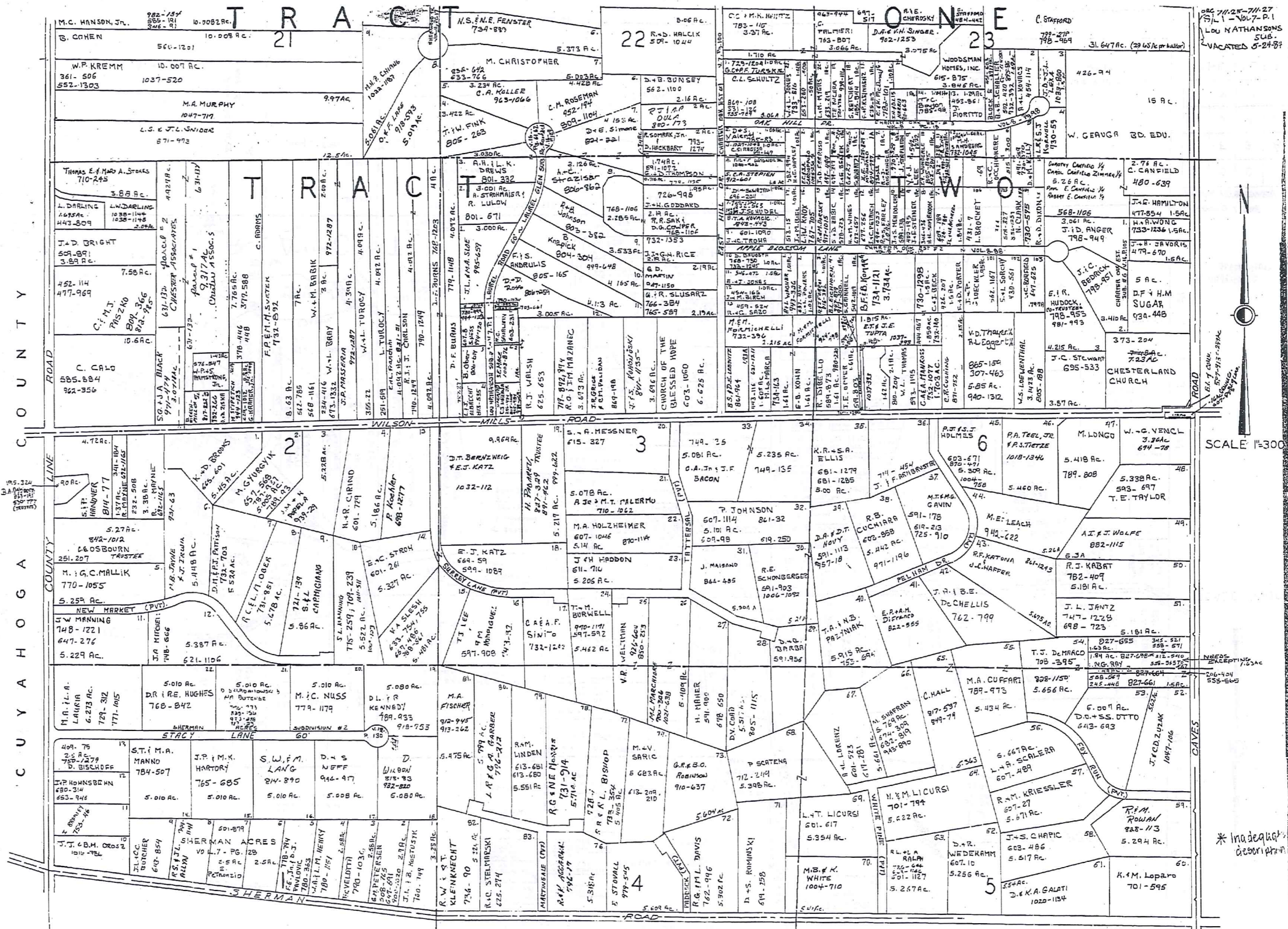
SCALE IN 1/100 OF AN INCH

*Inadequate description

JANUARY 1, 1996
RELATIVE REPRESENTATION

A	B	C
E	F	G
I	J	K
M	N	O

CHESTER D



7/1/25-7/1/27
 1-1047-P.1
 LOU NATHANSONS
 SUB.
 VACATED 6-24-84



SCALE 1"=300'

TOWNSHIP
 1-800-345-7334

SCALE IN 1/16" OF AN INCH

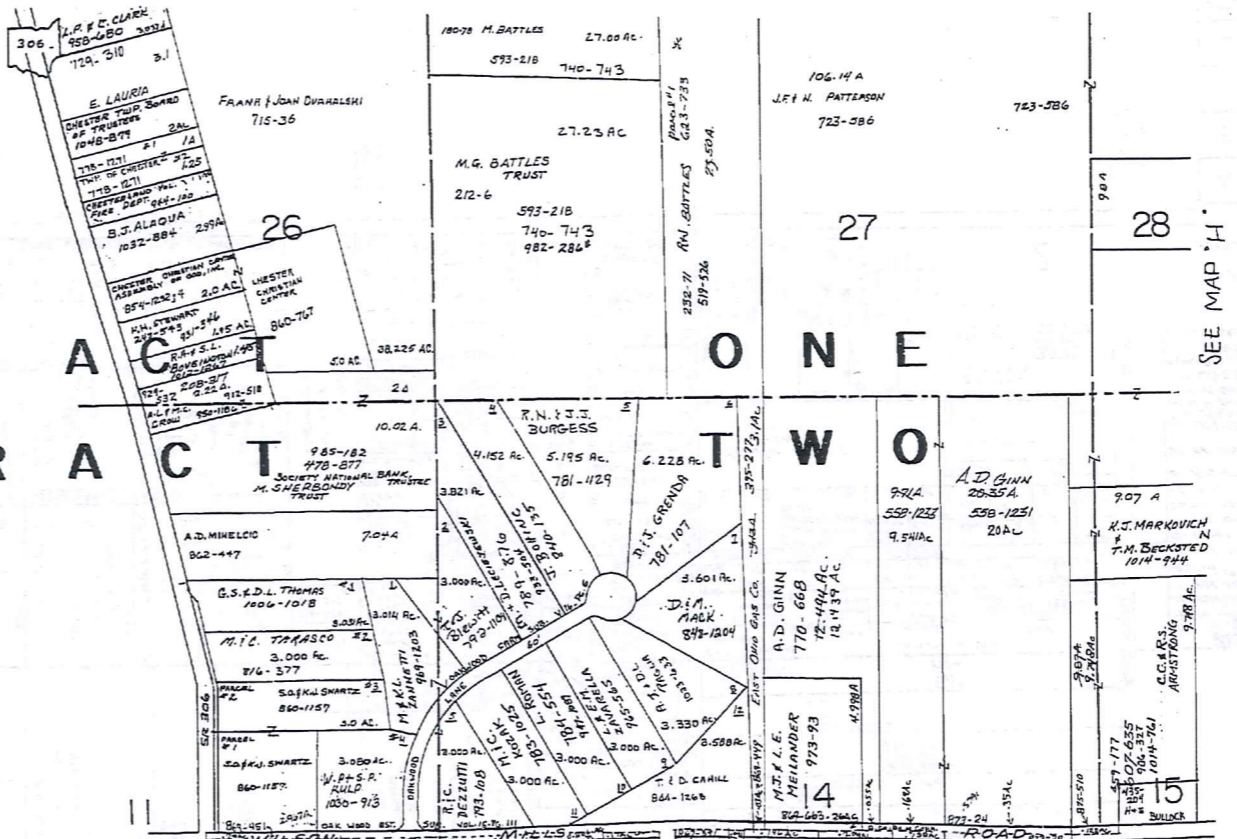
* Inadequate description

JANUARY 1, 1996.
 Relative Representation

A	B	C	D
F	G	H	
I	J	K	L
M	N	O	P

CHESTER

TRACT ONE



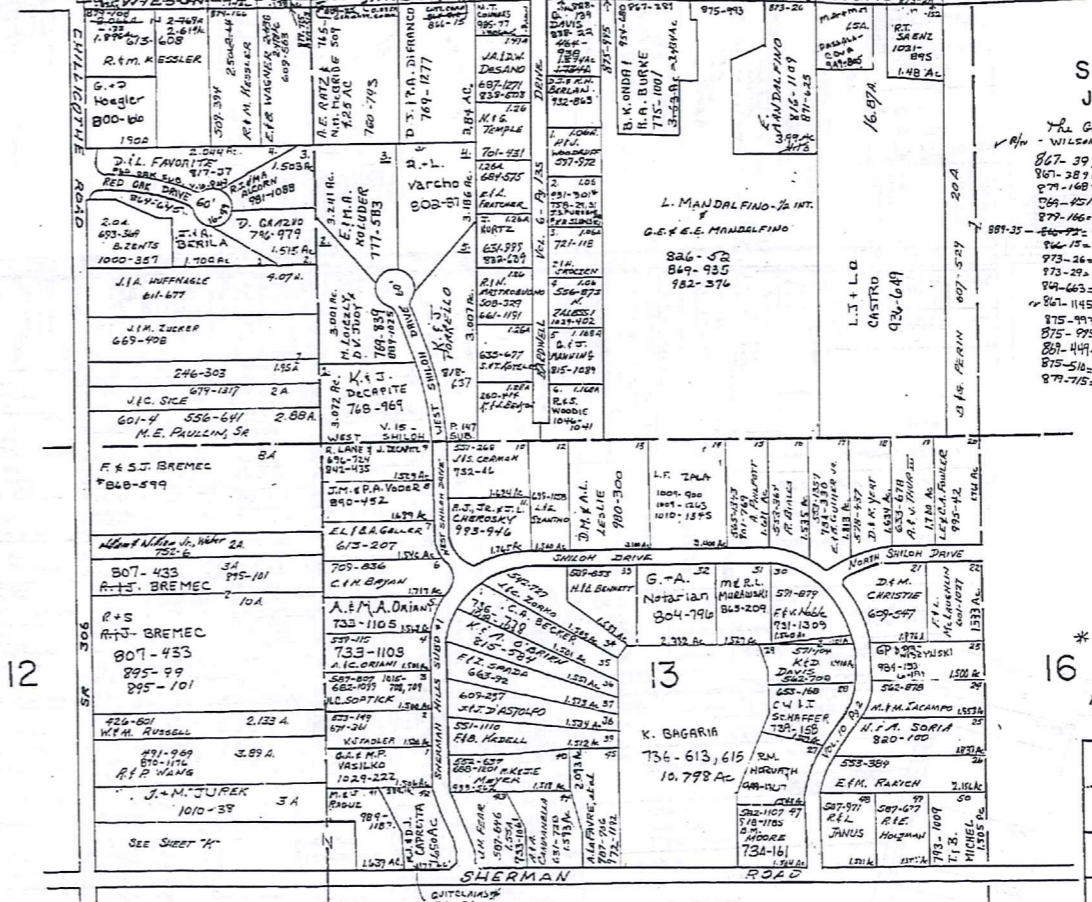
SCALE 1"=300'
JAN. 1, 1996

THE GEORGE CO. Bd. of Commissioners
vs. WILSON MILLS & CO.
867-39 1/2 .16A
867-389 .15AC
871-148 .13AC
878-254 .29AC
877-166 .14AC
881-35 - 400000 .225AC
866-15 .206AC
873-26 .137AC
873-29 .152AC
866-665 .26AC
875-145 .17AC
875-193 .20AC
875-275 .10AC
881-441 .13AC
875-516 .122AC
877-715 .138AC

1-800-345-7334

TRM-REM

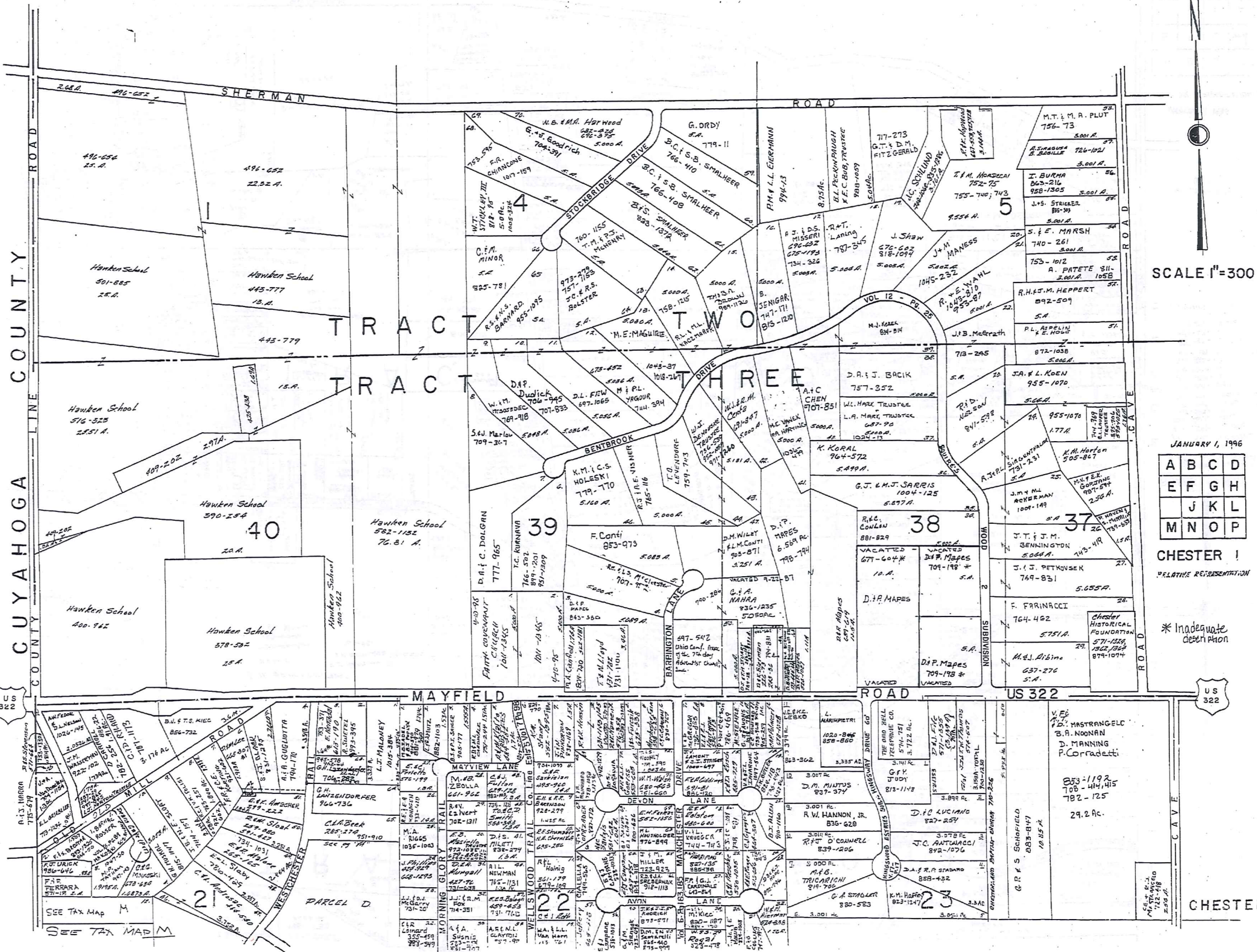
SCALE IN 1/10 OF AN INCH



* INADEQUATE DESCRIPTION!
JANUARY 1, 1996
RELATIVE REPRESENTATION

A	B	C	D
E	F	G	H
I	J	K	L
M	N	O	P

CHESTER G



1-800-345-7334
TRW-REED

SCALE 1"=300

JANUARY 1, 1996

A	B	C	D
E	F	G	H
J	K	L	
M	N	O	P

CHESTER I
RELATIVE REPRESENTATION

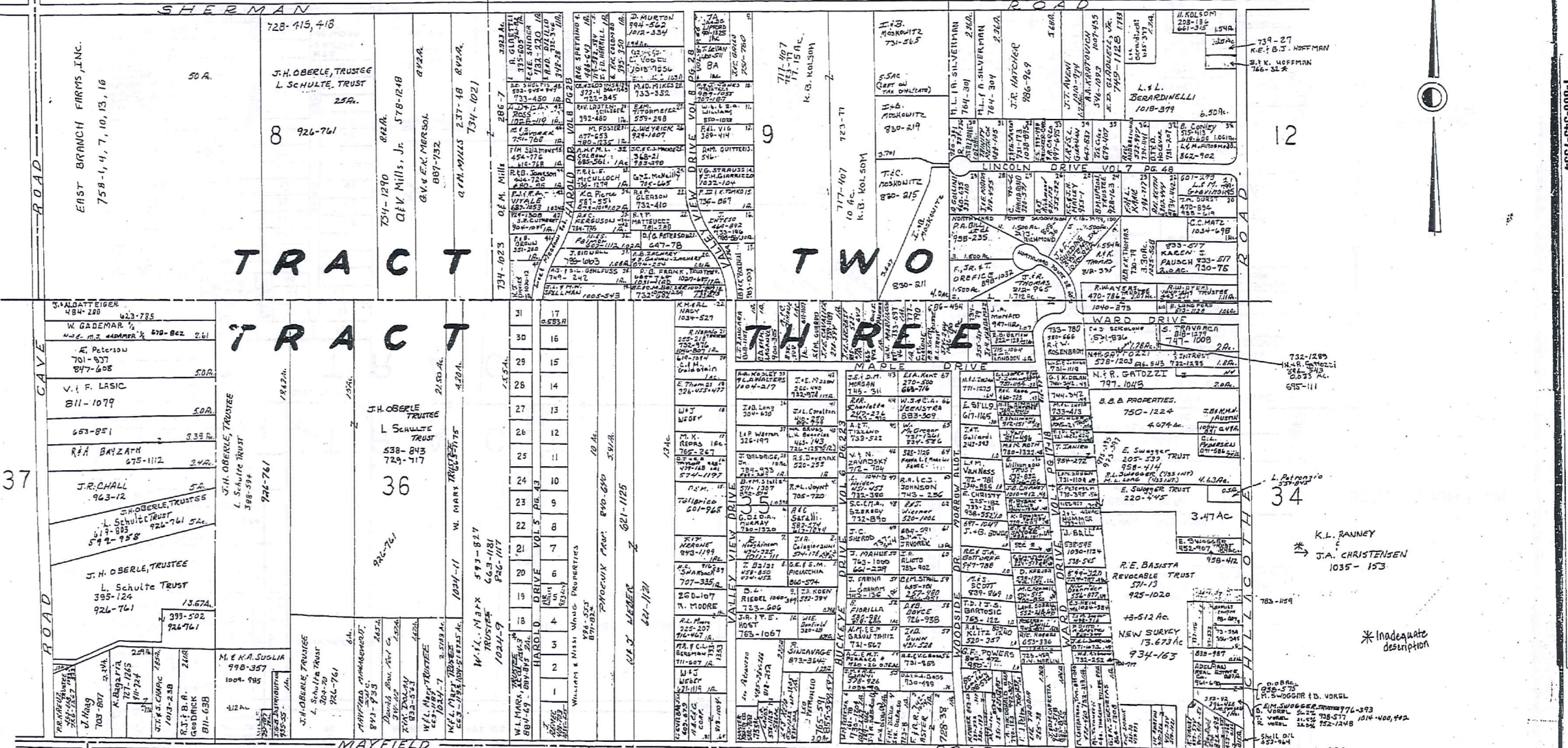
* Inadequate description

SCALE IN 1/100 OF AN INCH

SEE TAX MAP M

CHESTER

HAROLD DRIVE		ALLOT. VOL. 5 P. 43	
1	J. W. ECK	1021-9	31
2	J. P. NITMAN	154-418	32
3	J. M. GASKO	154-418	33
4	M. R. PAVONI	324-232	34
5	M. R. WILLIS	1021-9	35
6	R. H. PLATEK	171-1245	36
7	A. D. GARDNER	171-1245	37
8	E. A. WINTOR	171-1245	38
9	D. NEWTON	171-1245	39
10	J. W. C. PETERSON	171-1245	40
11	M. L. S. DEGENER	171-1245	41
12	R. C. TOLSON	171-1245	42
13	M. G. SEARVELL	171-1245	43
14	F. G. ROSEN	171-1245	44
15	H. P. HINCHER	171-1245	45
16	C. DRESING	171-1245	46
17	J. A. DADDARIO	171-1245	47
18	H. E. B. J. HOFFMAN	171-1245	48
19	J. H. B. J. HOFFMAN	171-1245	49
20	J. H. B. J. HOFFMAN	171-1245	50



217

37

SCALE 1"=300

JANUARY 1, 1906
RELATIVE REPRESENTATION

A	B	C	D
E	F	G	H
I	J	K	L
M	N	O	P

CHESTER J

TRM-REDI
1-800-345-7334

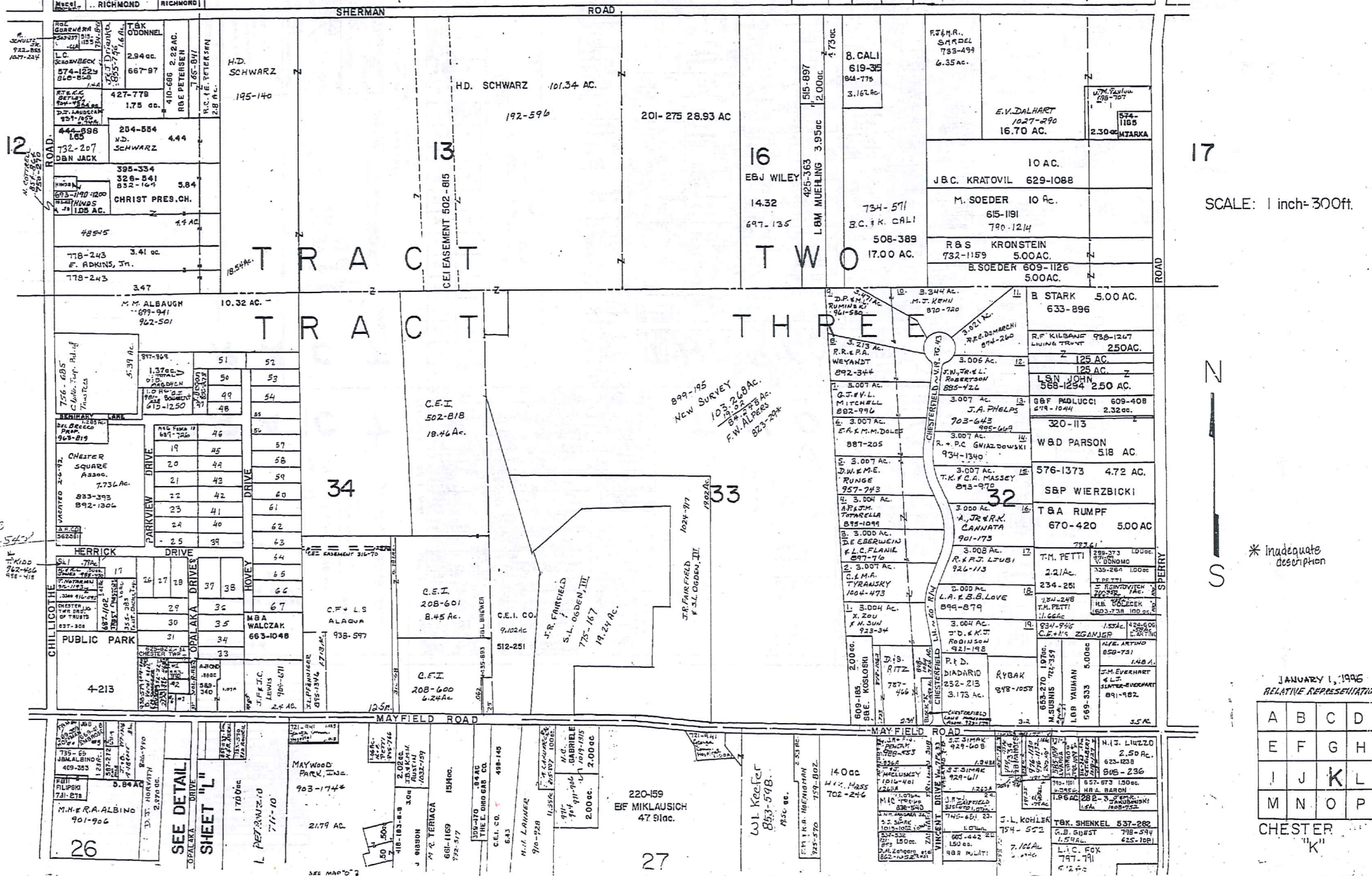
SCALE IN 1/8\"/>

H-HERRICK COUNTRY ESTATES VOL. 5, PG 398-40 (PLATS)

- 1H C&H METZ 444-833
- 2H
- 3H
- 4H
- 5H
- 6H
- 7H
- 8H VACATED 2-6-92
- 9H Lots 2-3-4-5-6-7
- 10 8-9-10-11-12
- 11 13-14-15-16
- 12
- 13
- 14
- 15
- 16 L. DeFranz 505-550
- 17 AGE FISCO 478-654
- 18 RBN DINUZIO 565-25
- 19 RBN DINUZIO 565-25
- 20 RBN DINUZIO 565-25
- 21 ABE SOBODOSH 731-1238
- 22
- 23 F.P. FERRARA 934-447
- 24 D.L. FERRARA 935-1104
- 25 R.M. J.M. VANHUSEN 739-659, 940-212
- 26 CHESTER TRP. 1041-1228
- 27 H. SCHUTT 805-884, 802-1050
- 28 DILLARD, INC. 730-830, 902-1160, 914-623
- 29 EAC BROOKS 335-31
- 30
- 31 W. LARRICK 498-973, 920-753
- 32 JBB SPISAK 59-63
- 33 KGG GREINER 285-382
- 34
- 35 E. KOZENSKI 399-386
- 36 RBF GAFFNEY 497-709
- 37 G.M.B.M.L. BURNETT 502-1101
- 38 R. IANMARINO 617-394
- 39 R.B.P. HASSETT 429-370
- 40 S. BARTLETT 415-1540
- 41 C&K NEMEC 578-145
- 42 E.J. & S.G. JACONA 936-1077
- 43 W.L.K. BARTLETT 812-1247, 812-693
- 44
- 45 T.L. & K.E. KRANER 708-7-378
- 46 JBF TODANO 494-23
- 47 WBD LUCIANO 496-436
- 48 L. HOMES 454-573
- 49 T.O. MAROUS 550-1185, 875-844
- 50 F&P ACCEL 386-127, 733-1234
- 51 RBL FRANK 509-154
- 52 EBH COWLES 304-146
- 53 FBH WISCH 307-145, 953-220
- 54 G. STYAN 501-765
- 55 J.M. JERMAN 295-487
- 56 H.L. BROWN 320-780, 1038-828
- 57 S. TOSAL UDI-COM 278-128, 974-685, 1032-733
- 58 G.P. PADLETTA 443-668, 860-1145, 972-1319
- 59 ABR WOODWORTH 315-66
- 60 JGG PECK 657-366
- 61 C.R. RIPLEY 718-18
- 62 J. WOODWARD 505-71
- 63 D.F. P.M. COATT 795-80
- 64 M.L. P.V.A. HARRIS 850-945
- 65 W.L. MANSFIELD 278-299, 1045-741
- 66 J.W. MUNK 689-959
- 67 R.A. PINGATORE 886-255, 914-1203

- 700-64 QCD - 1 553-892 A. FERRARA .415 AC
- QCD 700-647 - 2 A.D. OLIVIERO 801-257(3) .415 AC
- 747-802 - 3 821-634 W&P GALLIARDI .087 AC
- 4 - 4 H. ROFFMAN et al. 876-743, .078 AC
- 5 734-1033, 989, 140 3.45 ABRIDGE 0.732 AC
- 6 678-1144 A.D. OLIVIERO .17 AC
- 7 486-58 A.J. HENRY 134, 146 .22 AC
- 8 731-1110, GBA BALICE

(ALL LOTS ARE NEAR PUBLIC PARK ON MAYFIELD)



TRAVELER 1-800-345-7334

SCALE 1/100 OF INCH

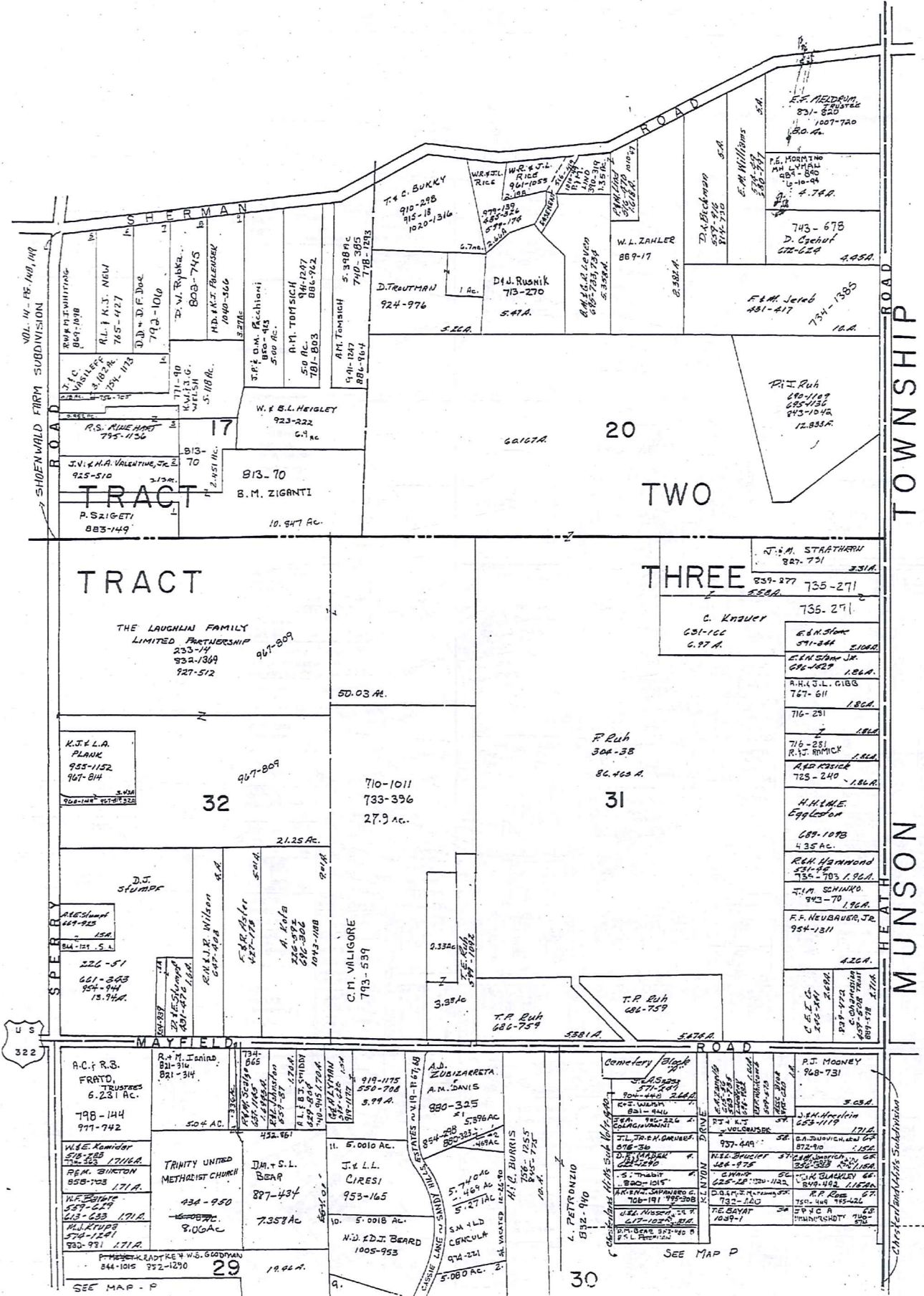
* Inadequate description

JANUARY 1, 1996
RELATIVE REPRESENTATION

A	B	C	D
E	F	G	H
I	J	K	L
M	N	O	P

CHESTER "K"

218



MAYFIELD ROAD US. 322

MYRLIN HEIGHTS SUB.

VOL. 3 Pt. 4 PLATS
SCALE 1" = 100'

1	W.M. Williams	5.220	850
2	T.P. Williams	607	1187
3	R.V. Caprel	767	159
4	S.J. Thornberry	964	453
5	P.A. & G.A. Ostrowsky	934	374
6	R.S. Stevens	703	1250
7	R.T. Crowl	826	434
8	M.M. Plumptre	805	1173
9	T.E. Hoover	990	1005
10	R.T. & C.L. Ryan	920	150
11	B.A. Woods	708	506
12	A.J. & G.B. Pugh	955	791
13	L.E. & J.H. Schill	760	422
14	H.F. & E.M. Kallade	796	578
15	G.E.M. Barber	855	1201
16	P.E. Shellhammer	803	1516
17	J.L. LaHarrou	773	213
18	I.L. Crosby	756	1123

19	A.V. Caprel	767	159
20	S.J. Thornberry	964	453
21	P.A. & G.A. Ostrowsky	934	374
22	R.S. Stevens	703	1250
23	R.T. Crowl	826	434
24	M.M. Plumptre	805	1173
25	T.E. Hoover	990	1005
26	R.T. & C.L. Ryan	920	150
27	B.A. Woods	708	506
28	A.J. & G.B. Pugh	955	791
29	L.E. & J.H. Schill	760	422
30	H.F. & E.M. Kallade	796	578
31	G.E.M. Barber	855	1201
32	P.E. Shellhammer	803	1516
33	J.L. LaHarrou	773	213
34	I.L. Crosby	756	1123

35	J.J. & M.J. Pavilonis	811	1023
36	R.M. Janito	855	1201
37	P.E. Shellhammer	803	1516
38	J.L. LaHarrou	773	213
39	I.L. Crosby	756	1123

40	A.M. & J. Wilson	1030	756
41	L.H. Hall	836	1051
42	L.H. Hall	724	21
43	J.J. & M.J. Pavilonis	811	1023
44	R.M. Janito	855	1201
45	P.E. Shellhammer	803	1516
46	J.L. LaHarrou	773	213
47	I.L. Crosby	756	1123

SCALE 1" = 300'
JAN 1, 1983

* Inadequate description

JANUARY 1, 1996
RELATIVE REPRESENTATION

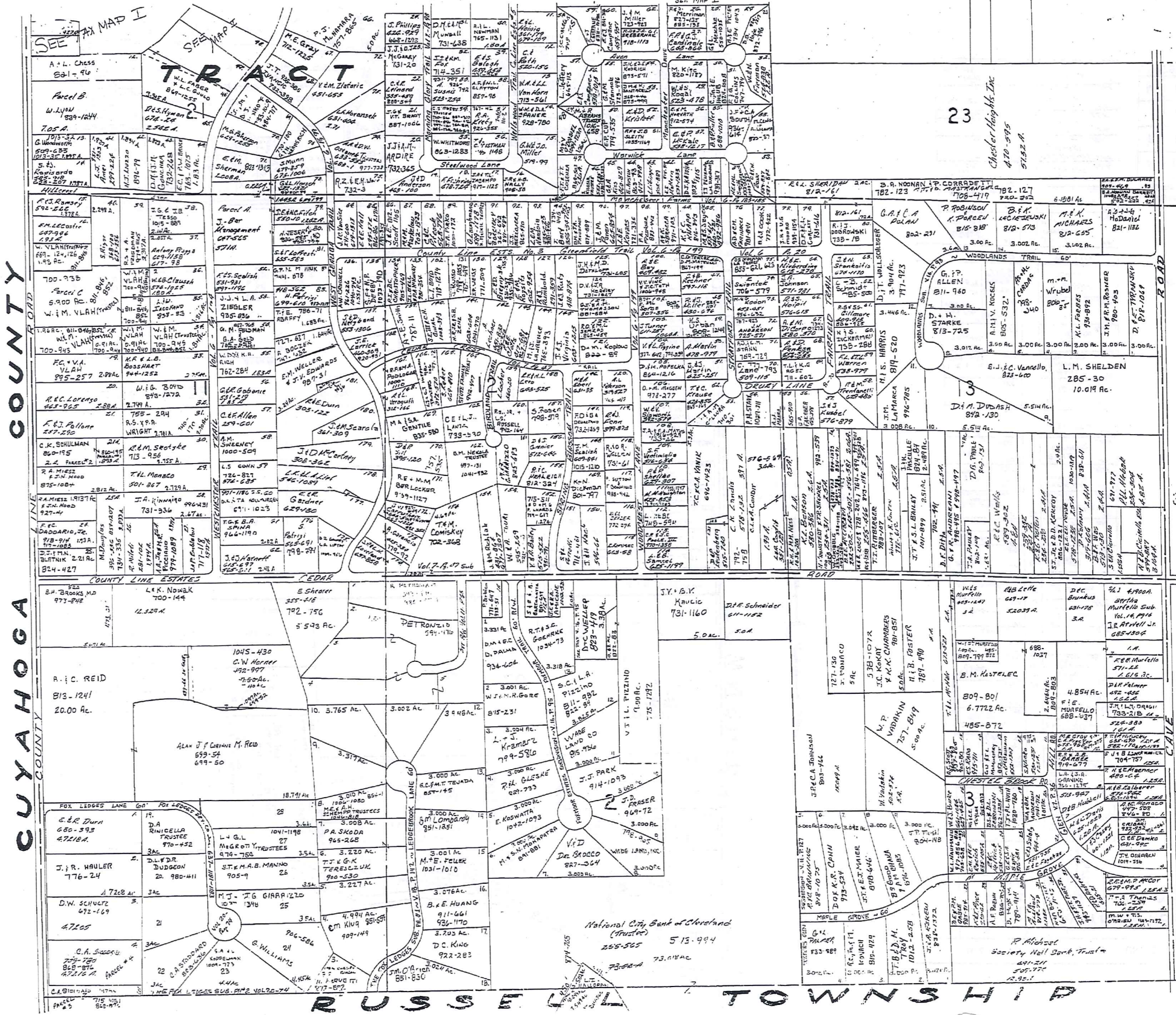
A	B	C	D
E	F	G	H
I	J	K	
M	N	O	P

CHESTER L

TRM-REDI
1-800-345-7334



SCALE IN FEET OF ANCHOR



CUYAHOGA COUNTY

CUYAHOGA COUNTY

CUYAHOGA COUNTY

CUYAHOGA COUNTY

CUYAHOGA COUNTY

CUYAHOGA COUNTY

CUYAHOGA COUNTY

CUYAHOGA COUNTY

CUYAHOGA COUNTY

CUYAHOGA COUNTY

CUYAHOGA COUNTY

CUYAHOGA COUNTY

CUYAHOGA COUNTY

CUYAHOGA COUNTY

CUYAHOGA COUNTY

CUYAHOGA COUNTY

CUYAHOGA COUNTY

CUYAHOGA COUNTY

CUYAHOGA COUNTY

CUYAHOGA COUNTY

CUYAHOGA COUNTY

CUYAHOGA COUNTY

CUYAHOGA COUNTY

CUYAHOGA COUNTY

CUYAHOGA COUNTY

CUYAHOGA COUNTY

CUYAHOGA COUNTY

CUYAHOGA COUNTY

CUYAHOGA COUNTY

CUYAHOGA COUNTY

CUYAHOGA COUNTY

CUYAHOGA COUNTY

CUYAHOGA COUNTY

CUYAHOGA COUNTY

CUYAHOGA COUNTY

CUYAHOGA COUNTY

CUYAHOGA COUNTY

CUYAHOGA COUNTY

CUYAHOGA COUNTY

CUYAHOGA COUNTY

CUYAHOGA COUNTY

CUYAHOGA COUNTY

SCALE 1:300

JAN. 1, 1996

* inadequate description.

RELATIVE REPRESENTATION

A	B	C	D
E	F	G	H
I	J	K	L
M	N	O	P

CHESTER M

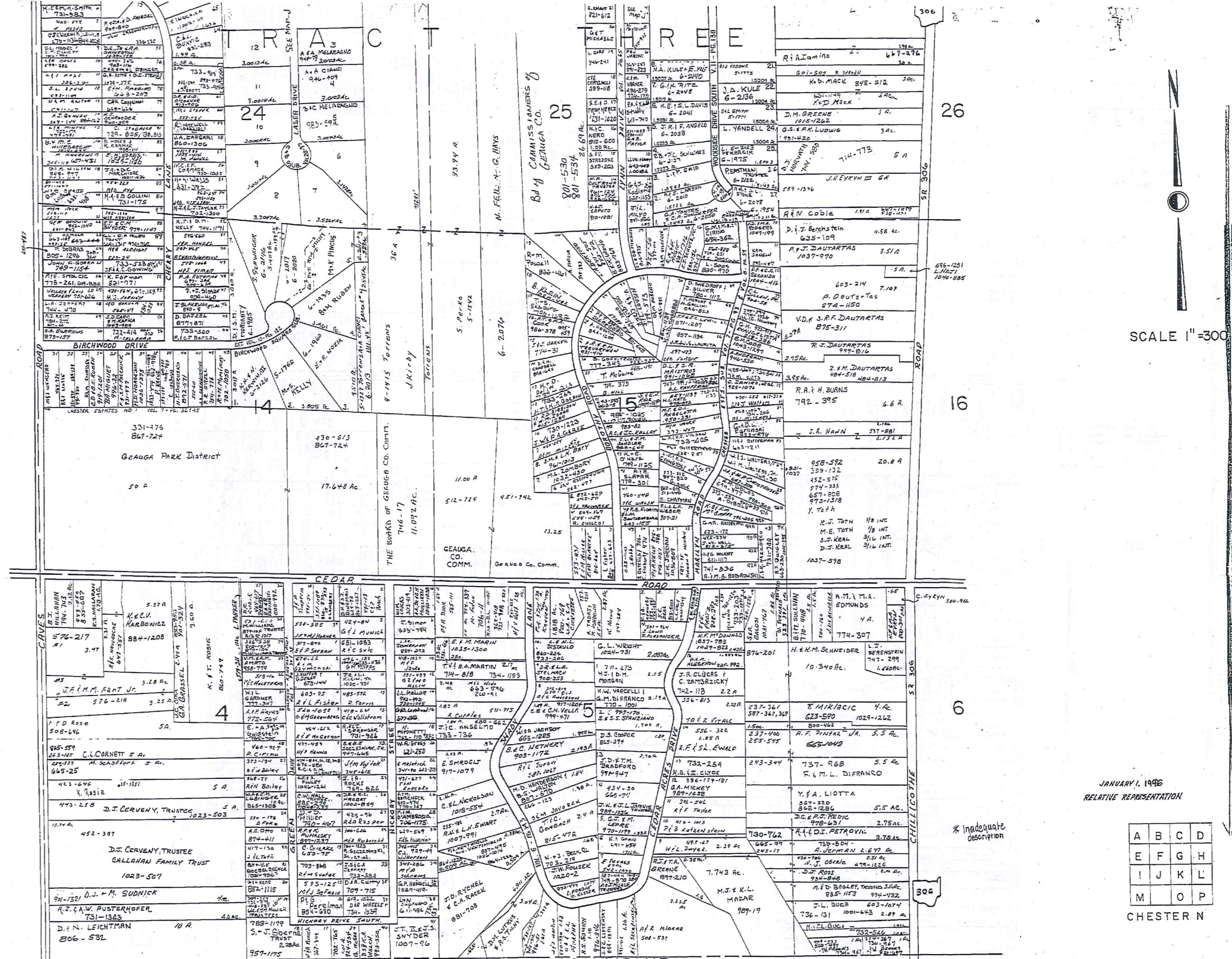
1-800-345-7334

SCALE 1/100 OF AN INCH

RUSSELL TOWNSHIP

National City Bank of Cleveland (Trustee) 255-565 513-994

P. Michael Society Natl Bank, Trustee 421-211 507-777 12-95-1



SCALE 1"=300'

1-800-345-7334

SCALE IN 1/4" OF AN INCH

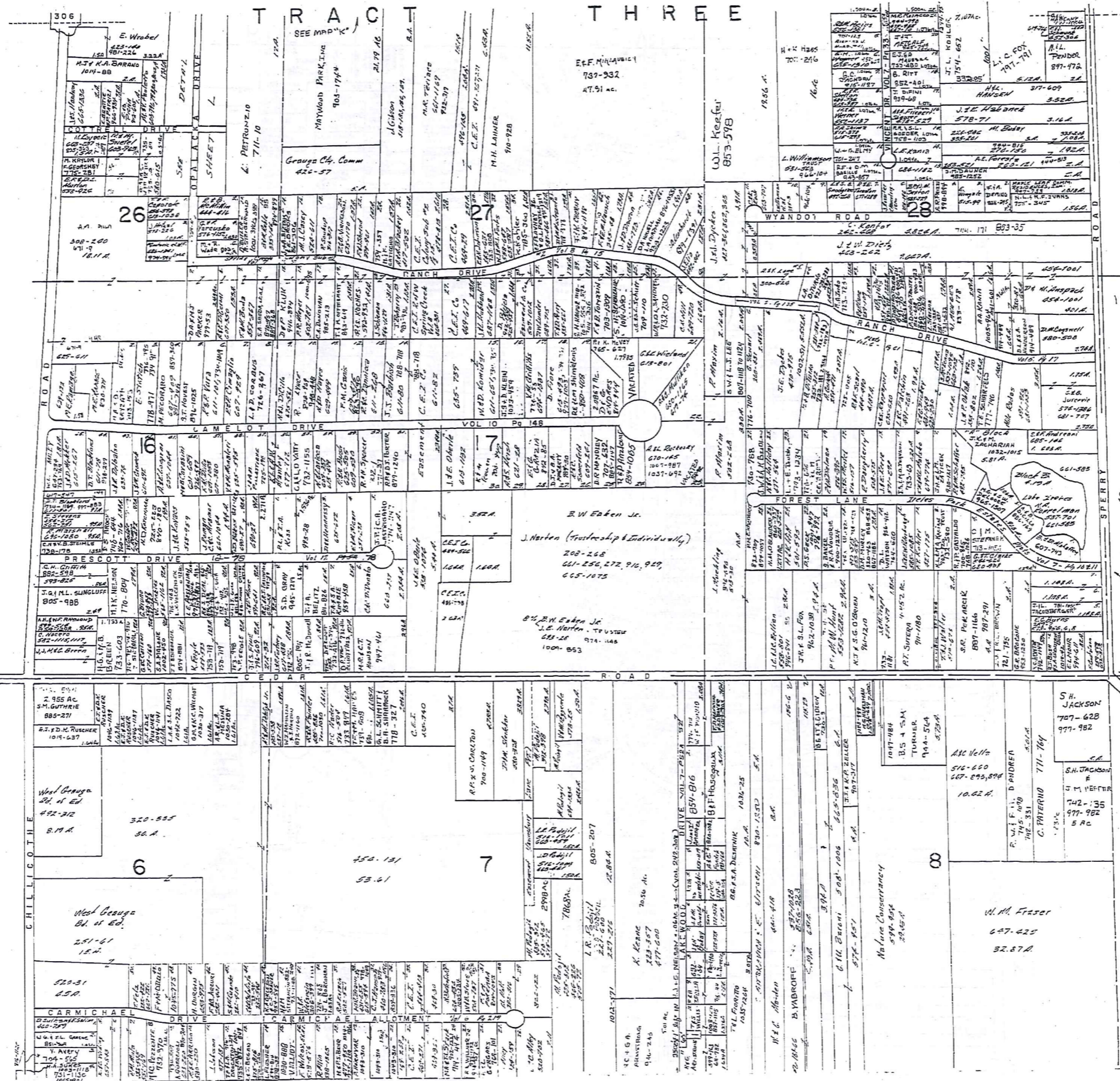
JANUARY 1, 1996
RELATIVE REPRESENTATION

A	B	C	D
E	F	G	H
I	J	K	L
M	O	P	

CHESTER N

* Inadequate description

RUSSELL TOWNSHIP



222

TRW-REDI
1-800-345-7334

SCALE 1" = 300'

SWIGGER SURVEY Vol. 6 Pg. 29 Plats
 1. E. A. HARRIS 200-514
 2. E. L. HARRIS 200-514
 3. E. G. HARRIS 200-514
 4. E. C. HARRIS 200-514
 5. E. D. HARRIS 200-514
 6. E. F. HARRIS 200-514
 7. E. G. HARRIS 200-514
 8. E. H. HARRIS 200-514

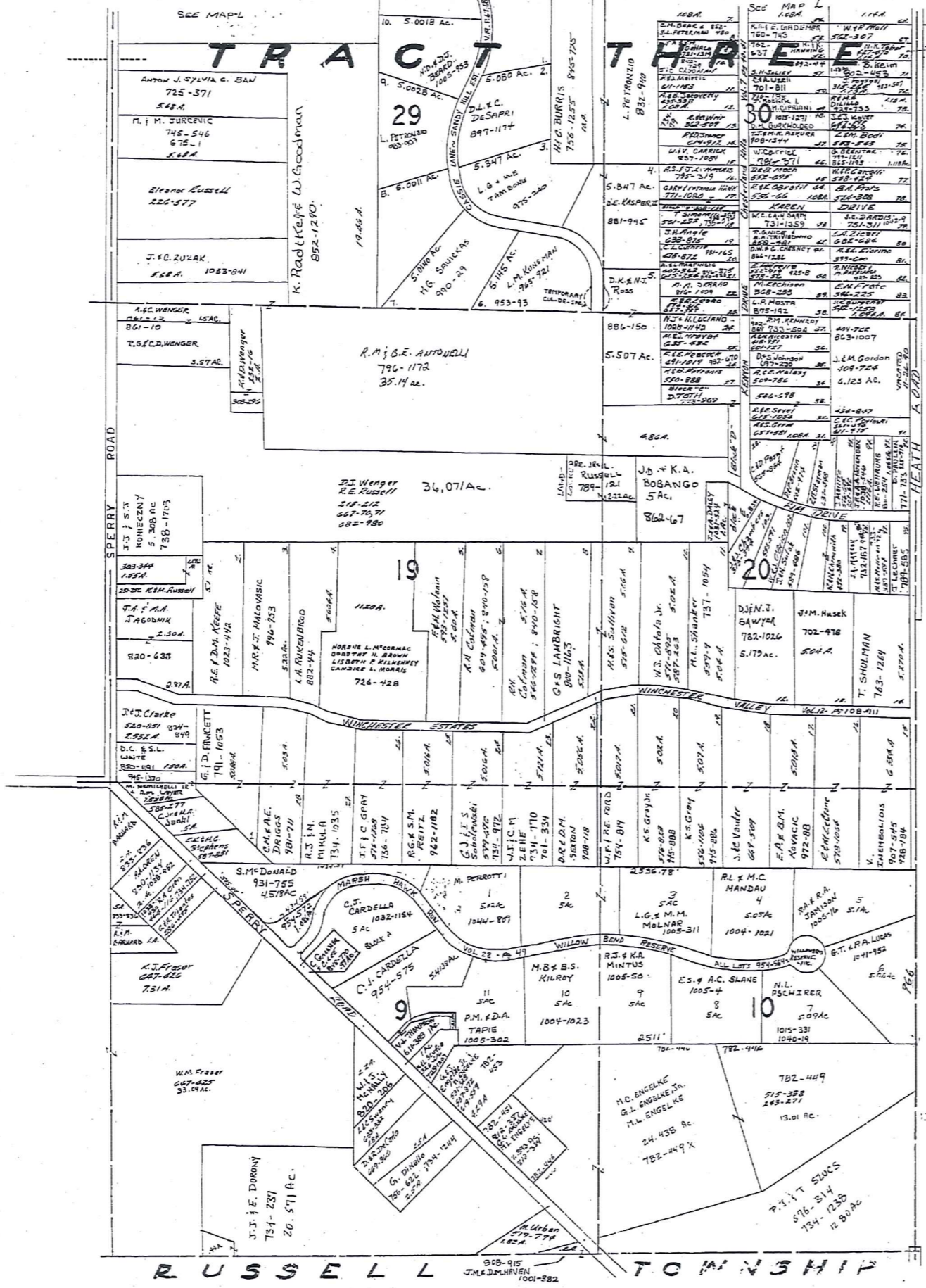
* Includes description

JANUARY 1, 1996
RELATIVE REPRESENTATION

A	B	C	D
E	F	G	H
I	J	K	L
M	N	O	P

CHESTER O

SCALE IN 1/10 OF AN INCH



MUNSON TOWNSHIP

SCALE 1" = 300'

JANUARY 1, 1996

RELATIVE REPRESENTATION

* Inadequate description

A	B	C	D
E	F	G	H
I	J	K	L
M	N	O	

CHESTER P

1-800-345-7334

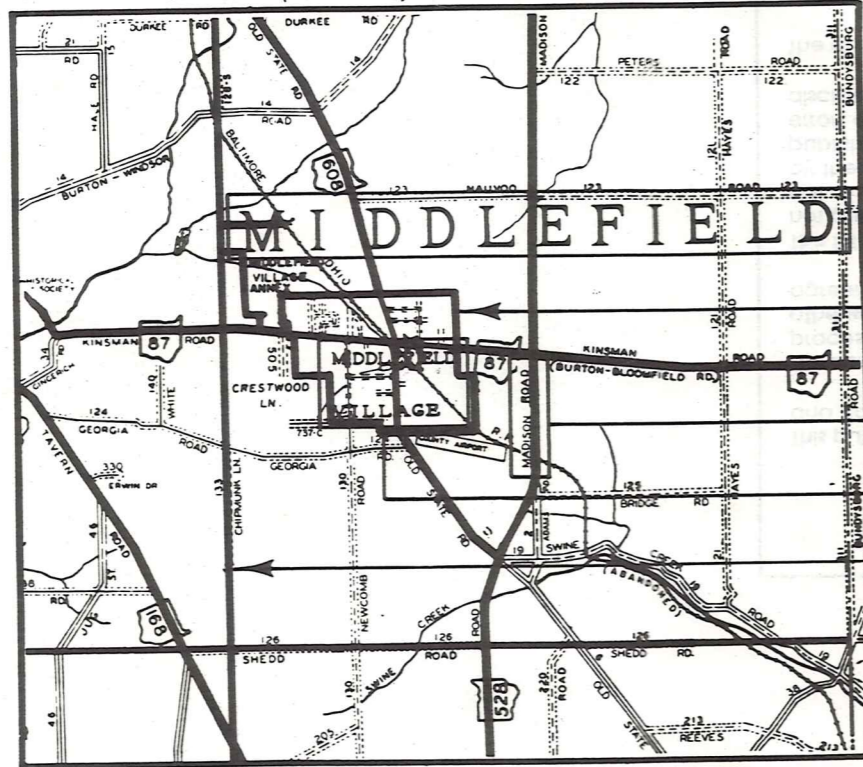
TRIM-REMI

SCALE IN 7/16 OF AN INCH

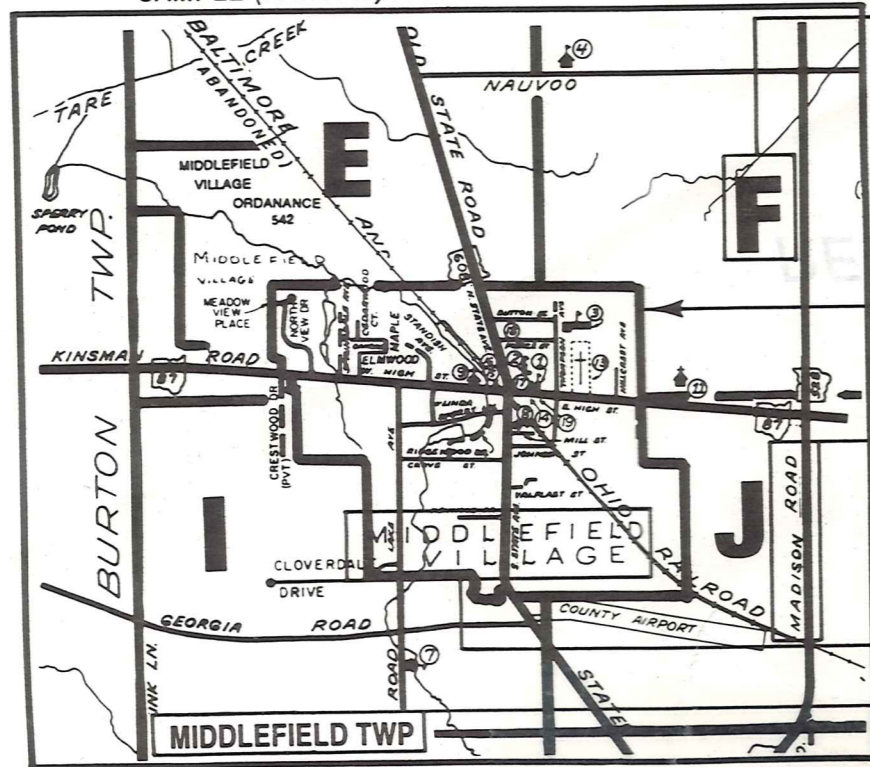
Explanation and Use Sheet for Geauga County, Ohio

A

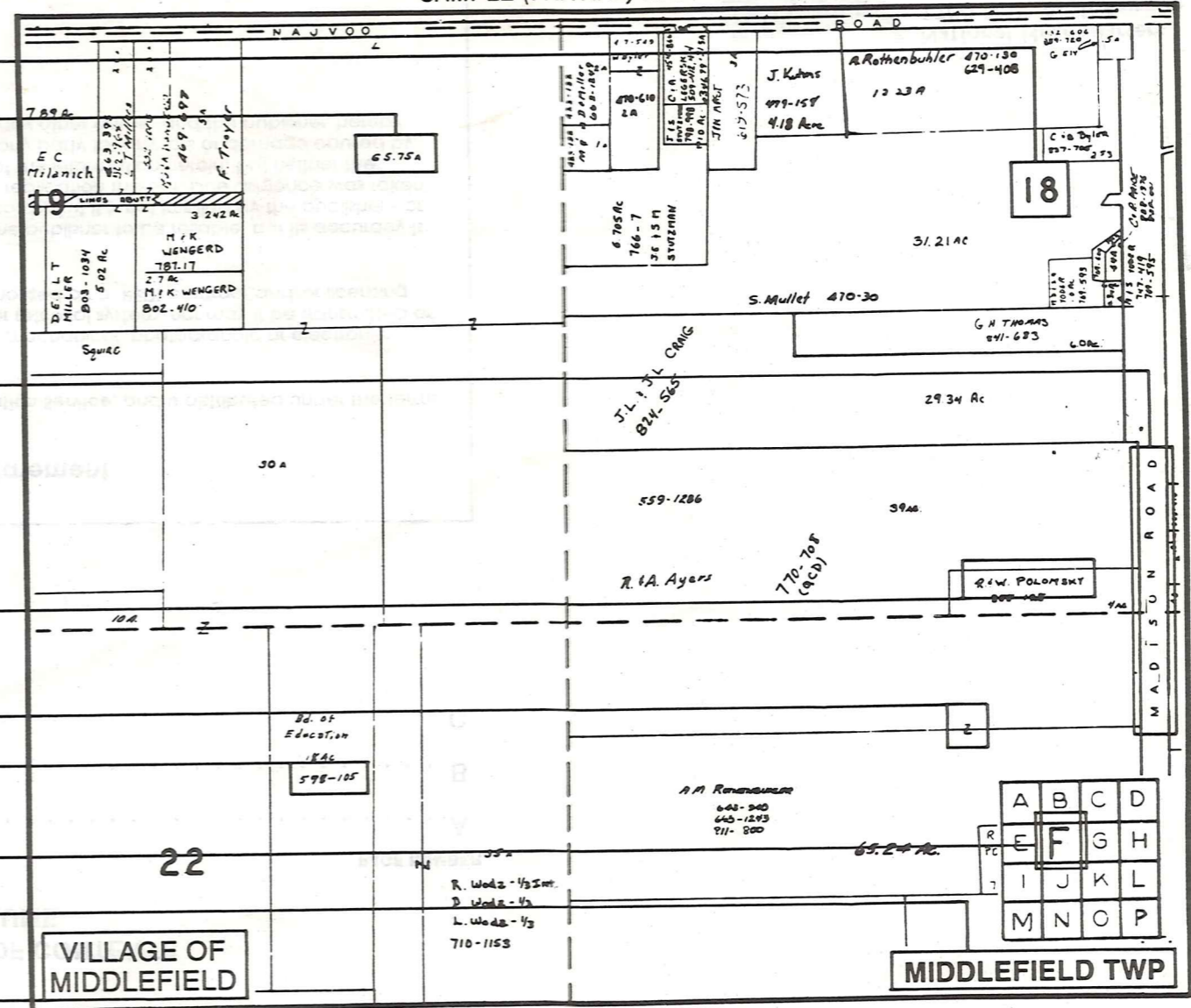
SAMPLE (PARTIAL) COUNTY INDEX MAP



SAMPLE (PARTIAL) MUNICIPALITY INDEX MAP



SAMPLE (PARTIAL) MAP PAGE



- Tract Lot Number
- Acreage
- Township Name
- Village Boundary
- Street Name
- Village Name
- Township Boundary
- Owners Name
- Denotes Continuous Ownership
- Deed Book & Page
- Map Page Number
- Township Name
- Village Name

- Village Boundary
- Street Name
- Village Name
- Township Name

USE OF THE MAP VOLUME

1. LOCATE THE GENERAL AREA OF INTEREST ON THE COUNTY INDEX MAP AND NOTE THE MUNICIPALITY NAME (TOWNSHIP OR VILLAGE).
 2. REFER TO THE TABLE OF CONTENTS AND NOTE THE BEGINNING ATLAS PAGE NUMBER FOR THE MUNICIPALITY OF INTEREST.
 3. TURN TO THE PAGE INDICATED, ON THIS PAGE WILL APPEAR AN INDEX MAP FOR THAT MUNICIPALITY.
 4. LOCATE THE GENERAL AREA OF INTEREST AND NOTE THE MAP PAGE NUMBER. THIS MAY BE EITHER A LETTER OR A NUMBER.
 5. MAP PAGES ARE IN ALPHABETICAL (OR NUMERICAL) SEQUENCE FOLLOWING THE MUNICIPALITY INDEX MAP. FOLLOW SEQUENCE TO THE MAP PAGE INDICATED.
 6. LOCATE SPECIFIC PARCEL OF INTEREST AND NOTE THE DESIRED INFORMATION.
- NOTE: ON SOME MAPS YOU MAY BE REFERRED TO A DETAIL SHEET SHOWING AN ENLARGEMENT OF THE AREA. THESE MAPS ARE FOUND AT THE END OF THE REGULAR MAP PAGES IN EACH MUNICIPALITY IN EITHER ALPHABETICAL OR NUMERICAL SEQUENCE.
- NOTE: CHARDON VILLAGE HAS TITLE SHEETS. TO LOCATE OWNERS NAME, NOTE THE PARCEL NUMBER, REFER TO THE TITLE PAGE FOLLOWING THE MAP OF INTEREST, FOLLOW NUMERICAL SEQUENCE TO THE PARCEL NUMBER OF INTEREST AND NOTE THE DESIRED INFORMATION. IN ALL OTHER MUNICIPALITIES THE OWNERS NAME APPEARS ON THE MAP PAGE.